





**Tree Protection Fencing**

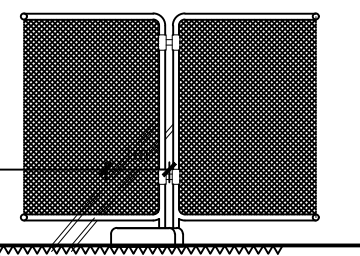
To be 1.8m high Heras site hoarding fencing erected in locations shown on the plan approx. 1m outside the RPA. Fencing to be braced with splys coupled to fence, (placed directly into/onto the ground without the use of weighted bases or dug foundations- using ground anchor pegs).

Signage to be provided on fencing to read 'PROTECTED AREA- NO ADMITTANCE'.

Fencing to remain on site through entire construction period to stop entry by construction plant or storage of materials or excavated material.

Drainage & Services trenches to be dug outside of protection areas.

--- fencing location



**BERRYS**  
PROPERTY | BUSINESS | PLANNING  
01743 271697 | SY2 6FG  
[www.berrys.uk.com](http://www.berrys.uk.com)

Client: Mrs. H. Thomas

Project: Proposed Dwelling on land at Cil Common, Berriew, Powys.

Drawing: Tree protection fencing.

Drawing Number:	Rev.	Scale	Paper	Drawn By:
SA26972/04		1:500	A4	RC
				Date: Jan 2018